

POSTER PRESENTATION

Open Access

Reproducibility of strain and twist measurements calculated using CSPAMM tagging

Peter Swoboda^{1*}, Abdulghani Larghat², John Greenwood², Sven Plein²

From 2011 SCMR/Euro CMR Joint Scientific Sessions
Nice, France. 3-6 February 2011

Objective

To establish inter-observer and inter-study variability of CSPAMM (complementary spatial modulation of magnetization) tagged CMR data.

Background

The reproducibility of CSPAMM-derived myocardial strain and left ventricular twist have not been described in detail.

Methods

12 healthy volunteers (6 males, mean age 33±7 years) underwent CMR studies on a 1.5T system (Intera CV, Philips Healthcare, The Netherlands). Tagged CMR images were acquired at the apex, mid-ventricle and base with a CSPAMM pulse sequence (field of view: 300mm, matrix 128 x 128, slice thickness 10mm, tag separation 8mm, 18 phases, typical TR/TE 30ms/6ms, flip angle 25 degrees). In 6 volunteers repeat data sets were acquired after a mean interval of 8±3 days.

Data were analysed by two independent observers using Tagtrack software (Gyrotools, CH). Circumferential Lagrangian strain, radial Lagrangian strain and rotation were calculated for the three short axis slices. Endocardial and epicardial borders were drawn, and a midline calculated automatically. Left ventricular twist was calculated by subtracting the basal rotation from the apical rotation. The mean difference between paired measurements, the standard deviation (SD) of the differences and the coefficient of variability (Co-V) were calculated.

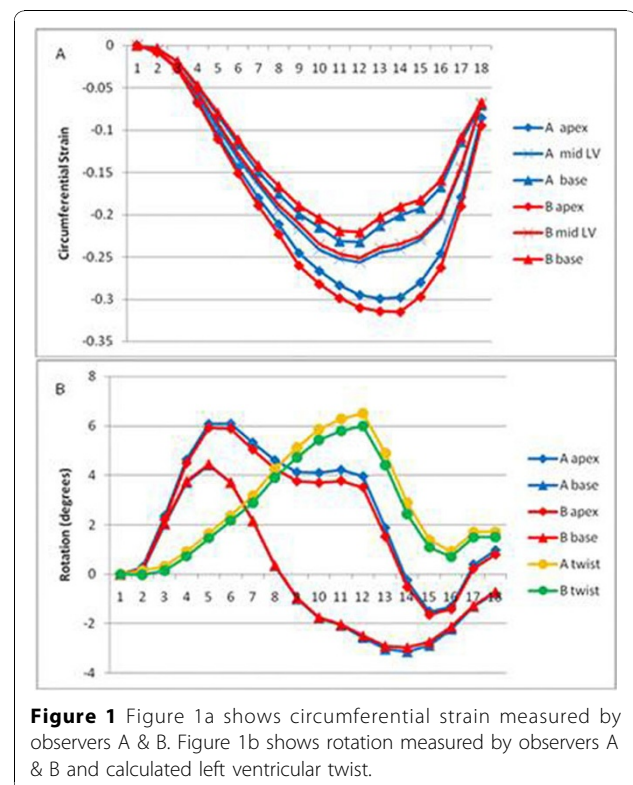
Results

Circumferential strain increased from base to apex (Figure 1a). Mean (SD) difference in circumferential

strain between the two operators was 6.9% (2.3), 8.2% (7.7) and 6.7% (5.0) at apex, mid-LV and base respectively. There was no significant difference in inter-observer variability in endocardial, midline and epicardial contours. See Table 1 for Co-V results.

Mean (SD) difference in mid-myocardium circumferential strain between visits was 6.7% (4.1), 6.5% (4.0) and 8.8% (5.2) at apex, mid-LV and base respectively.

Mean (SD) difference in radial strain between operators was 28.1% (47.8), 17.6% (21.6) and 26.7% (25.6) and



¹Leeds General Infirmary, Leeds, UK
Full list of author information is available at the end of the article

Table 1 shows percentage difference and coefficient of variation (Co-V) for inter-observer and inter-study variability of measured circumferential strain, radial strain and left ventricular twist

		INTER-OBSERVER VARIABILITY		INTER-STUDY VARIABILITY	
		Percentage difference (mean (SD))	Co-V %	Percentage difference (mean (SD))	Co-V %
circumferential strain	apex	6.9 (2.3)	4.4	6.7 (4.1)	8.3
circumferential strain	mid LV	8.2 (7.7)	11.2	6.5 (4.0)	7.7
circumferential strain	base	6.7 (5.0)	6.8	8.8 (5.3)	10.8
radial strain	apex	28.1 (47.8)	19.2	7.3 (6.0)	9.0
radial strain	mid LV	17.6 (21.6)	18.2	21.3 (11.1)	30.8
radial strain	base	26.7 (25.6)	42.1	35.6 (29.6)	59.2
rotation (twist)	apex-base	5.7 (4.3)	4.0	12.3 (9.9)	59.2

between visits was 7.3% (6.0), 21.3% (11.0) and 35.6% (29.6) at apex, mid-LV and base respectively.

The mean (SD) difference in mid-myocardium left ventricular twist between operators was 0.6° (0.3°) or 5.7% (4.3) and between visits was 1.2° (SD 0.9°) or 12.3% (9.9).

Conclusions

The inter-observer and inter-study variability of circumferential strain and LV twist measured from CSPAMM tagged CMR data are low, but are higher for radial strain.

Author details

¹Leeds General Infirmary, Leeds, UK. ²University of Leeds, Leeds, UK.

Published: 2 February 2011

doi:10.1186/1532-429X-13-S1-P52

Cite this article as: Swoboda et al.: Reproducibility of strain and twist measurements calculated using CSPAMM tagging. *Journal of Cardiovascular Magnetic Resonance* 2011 **13**(Suppl 1):P52.

Submit your next manuscript to BioMed Central and take full advantage of:

- Convenient online submission
- Thorough peer review
- No space constraints or color figure charges
- Immediate publication on acceptance
- Inclusion in PubMed, CAS, Scopus and Google Scholar
- Research which is freely available for redistribution

Submit your manuscript at
www.biomedcentral.com/submit

