

ORAL PRESENTATION

Open Access

Insulin resistance, subclinical left ventricular remodeling, and the obesity paradox: the multi-ethnic study of atherosclerosis

Ravi Shah^{1*}, Siddique Abbasi¹, Bobby Heydari¹, Carsten Rickers², David R Jacobs³, Lu Wang⁴, Raymond Y Kwong¹, David A Bluemke⁵, Joao A Lima⁵, Michael Jerosch-Herold⁵

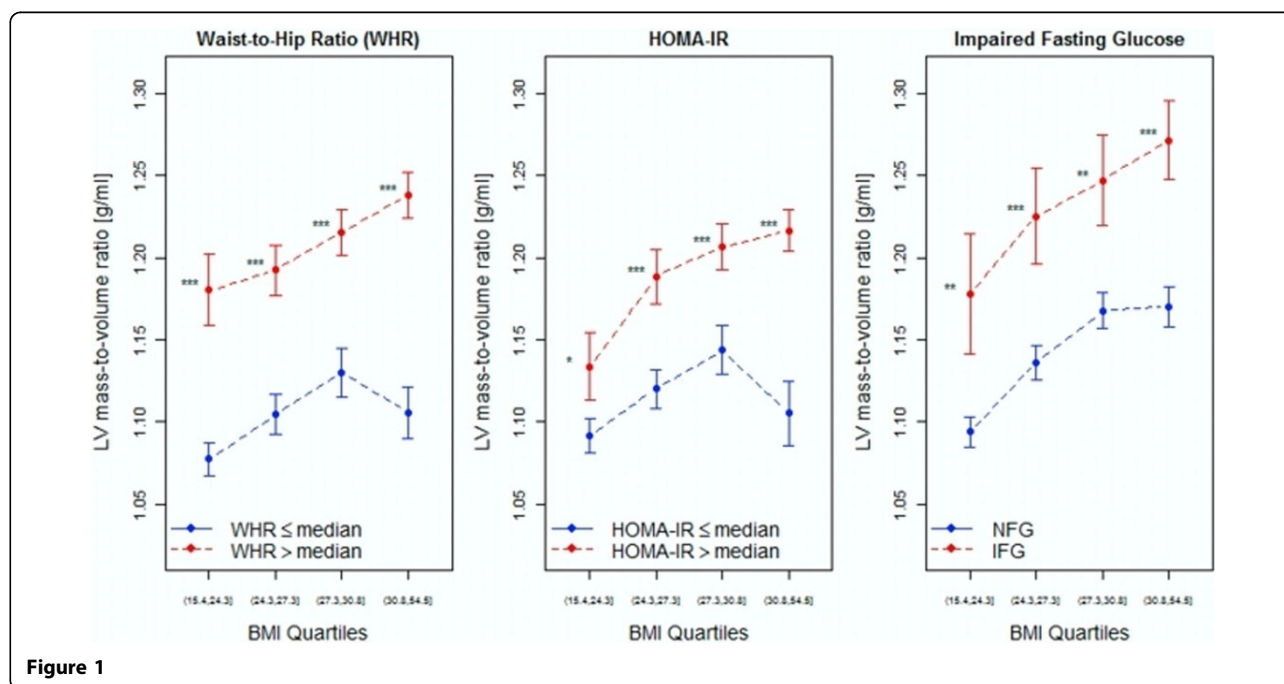
From 16th Annual SCMR Scientific Sessions
San Francisco, CA, USA. 31 January - 3 February 2013

Background

Recent studies suggest that central obesity and insulin resistance may be primary mediators of obesity-related cardiac remodeling independent of body mass index (BMI). We assessed in the Multi-Ethnic Study of Atherosclerosis (MESA) whether insulin resistance and waist-to-hip ratio had effects on cardiac remodeling, independent of obesity.

Methods

We investigated 4,364 individuals without diabetes in MESA. Insulin resistance (by impaired fasting glucose, IFG: 100-125 mg/dl or homeostatic model assessment of insulin resistance, HOMA-IR) and waist-to-hip ratio (WHR) were used for cardiometabolic phenotyping. Multivariate linear regression analysis was used to determine



¹Brigham and Women's Hospital, Boston, MA, USA
Full list of author information is available at the end of the article

the effects of the cardiometabolic markers on LV remodeling, assessed primarily through the LV mass-to-volume ratio obtained by cine cardiac magnetic resonance imaging.

Results

Individuals with IFG were more likely to be older, hypertensive, with increased prevalence of cardiometabolic risk factors regardless of BMI. In each quartile of BMI, individuals with above-median HOMA-IR, above-median WHR, or IFG had a higher LV mass-to-volume ratio ($p < 0.05$ for all). HOMA-IR ($p < 0.0001$), WHR ($p < 0.0001$), and the presence of IFG ($p = 0.04$), but not BMI ($p = 0.24$), were independently associated with LV mass-to-volume ratio after adjustment for age, gender, hypertension, race, and dyslipidemia.

Conclusions

Insulin resistance and waist-to-hip ratio are associated with concentric LV remodeling independent of BMI. These results support the emerging hypothesis that the cardiometabolic phenotype, defined by insulin resistance and central obesity, may play a critical role in LV remodeling independently of BMI.

Funding

MESA was supported by contracts NO1-HC-95159 through NO1-HC-95169 from the National Heart, Lung, and Blood Institute. Dr. Shah is supported by an American Heart Association Post-Doctoral Fellowship Award (11POST000002) and a training grant from the Heart Failure National Institutes of Health Clinical Research Network (U01-HL084877). Dr. Jerosch-Herold receives support through R01-HL-65580. All other authors have no financial disclosures relevant to the content of this manuscript.

Author details

¹Brigham and Women's Hospital, Boston, MA, USA. ²Department of Pediatric Cardiology, University Hospital of Schleswig-Holstein, Campus Kiel, Kiel, Germany. ³University of Minnesota, School of Public Health, Division of Epidemiology and Community Health, Minneapolis, MN, USA. ⁴Harvard School of Public Health, Department of Epidemiology and Biostatistics, Boston, MA, USA. ⁵Radiology and Imaging Sciences, National Institutes of Health Clinical Center, National Institute of Biomedical Imaging and Bioengineering, Bethesda, MD, USA.

Published: 30 January 2013

doi:10.1186/1532-429X-15-S1-O20

Cite this article as: Shah *et al.*: Insulin resistance, subclinical left ventricular remodeling, and the obesity paradox: the multi-ethnic study of atherosclerosis. *Journal of Cardiovascular Magnetic Resonance* 2013 15(Suppl 1):O20.

Submit your next manuscript to BioMed Central and take full advantage of:

- Convenient online submission
- Thorough peer review
- No space constraints or color figure charges
- Immediate publication on acceptance
- Inclusion in PubMed, CAS, Scopus and Google Scholar
- Research which is freely available for redistribution

Submit your manuscript at
www.biomedcentral.com/submit

