

**WORKSHOP PRESENTATION**

**Open Access**

# MR Fingerprinting with chemical exchange (MRF-X) to quantify subvoxel T1 and extracellular volume fraction

Jesse I Hamilton<sup>1\*</sup>, Mark A Griswold<sup>1,2</sup>, Nicole Seiberlich<sup>1</sup>

From 18th Annual SCMR Scientific Sessions  
Nice, France. 4-7 February 2015

## Background

MR Fingerprinting (MRF) [1] offers a novel approach for quantifying extracellular volume (ECV) in a single scan without contrast agent. Whereas conventional parameter mapping assumes chemical exchange occurs much faster than the experiment time scale, usually on the order of T1, MRF measurements are acquired every TR (less than 12ms). This project investigates the feasibility of a new MRF acquisition termed MRF-X, which takes chemical exchange effects into account, to generate voxel-wise maps of ECV and T1.

## Methods

Signal evolutions were simulated using the Bloch-McConnell equations for two pools with  $T1_{\text{extra}}=350\text{ms}$ ,  $T2_{\text{extra}}=30\text{ms}$ ,  $T1_{\text{intra}}=1400\text{ms}$ , and  $T2_{\text{intra}}=120\text{ms}$ , as suggested in [2]. Four tissues were simulated with ECV values of 25% and 50%, and moderate ( $k=8.3\text{s}^{-1}$ , as in [3]) or fast ( $k=1000\text{s}^{-1}$ ) exchange. A standard inversion recovery spin echo experiment was simulated with  $TE=50\text{ms}$ , TI ranging from 20-3000ms, and complete relaxation between measurements, and then used to fit apparent monoexponential T1 values to mimic native T1 mapping. Additionally, an MRF-X sequence with 500 measurements containing pseudorandom flip angles (0-70 deg) and TRs (9-12ms) was simulated. A sensitivity analysis was also performed by creating a dictionary with the following parameters:  $T1_{\text{intra}}$  and  $T1_{\text{extra}}$  100-2000ms, exchange rate  $1-10\text{s}^{-1}$ , and ECV 0-100% ( $T2_{\text{extra}}=30\text{ms}$  and  $T2_{\text{intra}}=120\text{ms}$  were fixed). Noise was added to a randomly selected signal evolution before matching it back to the dictionary. This process was

repeated for 1000 entries and SNR levels of 5-100, and the relative error for each parameter was computed as (estimated-actual)/actual. SNR was defined as the maximum in the signal evolution divided by the noise standard deviation.

## Results

Figure 1A shows monoexponential fits for T1 using a standard spin echo inversion recovery sequence. Although two compartments are present, a single effective T1 is observed that is different from intracellular or extracellular T1 and varies with exchange rate. Figure 1B shows MRF-X signal evolutions for two-compartment voxels with exchange, as well as single compartment voxels having the effective T1 determined by IR spin echo. The signal evolutions are distinguishable with MRF-X but not with standard T1 mapping. Figure 2 shows that MRF-X displays good sensitivity to ECV, intracellular T1, and extracellular T1, with 10% relative error or less for these parameters above  $\text{SNR}=20$ . MRF-X is somewhat sensitive to exchange rate with errors below 40% at  $\text{SNR}=30$  and 25% at  $\text{SNR}=100$ ; sequence optimization could potentially improve the accuracy in fitting this parameter.

## Conclusions

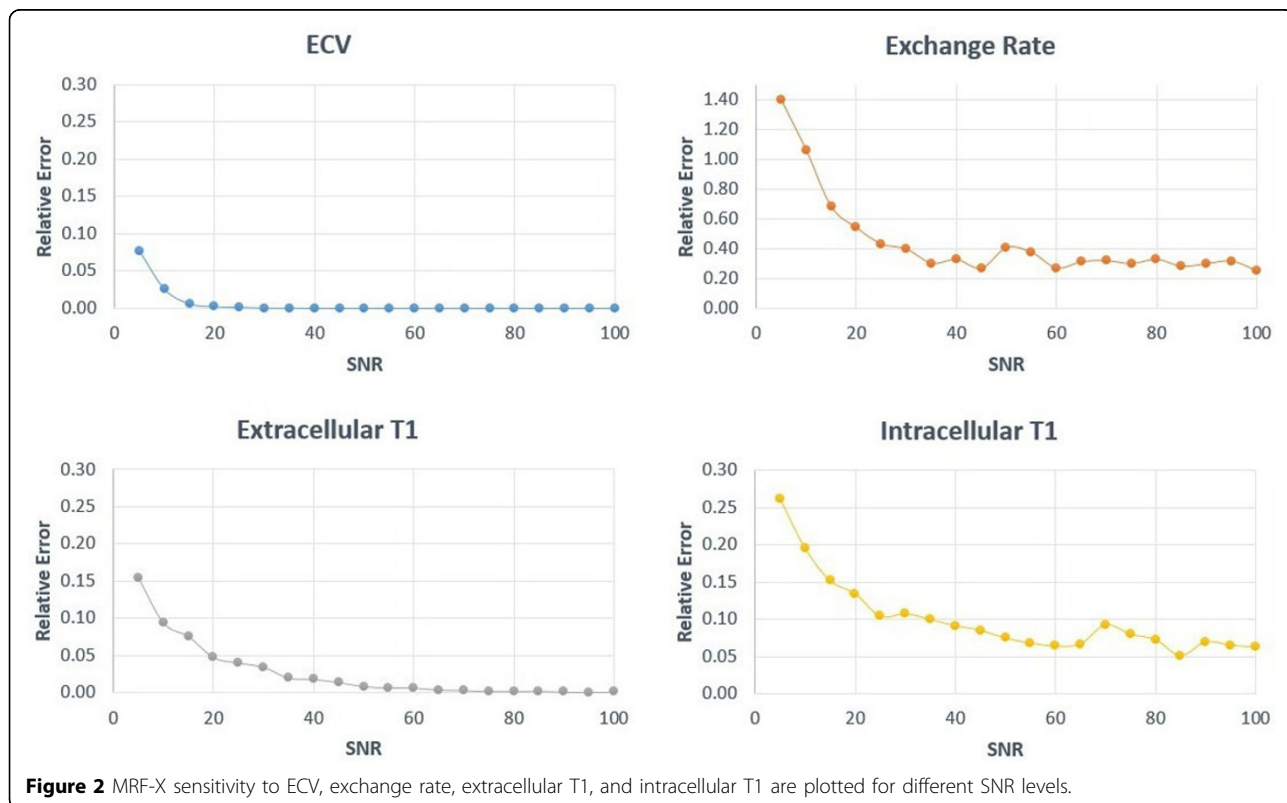
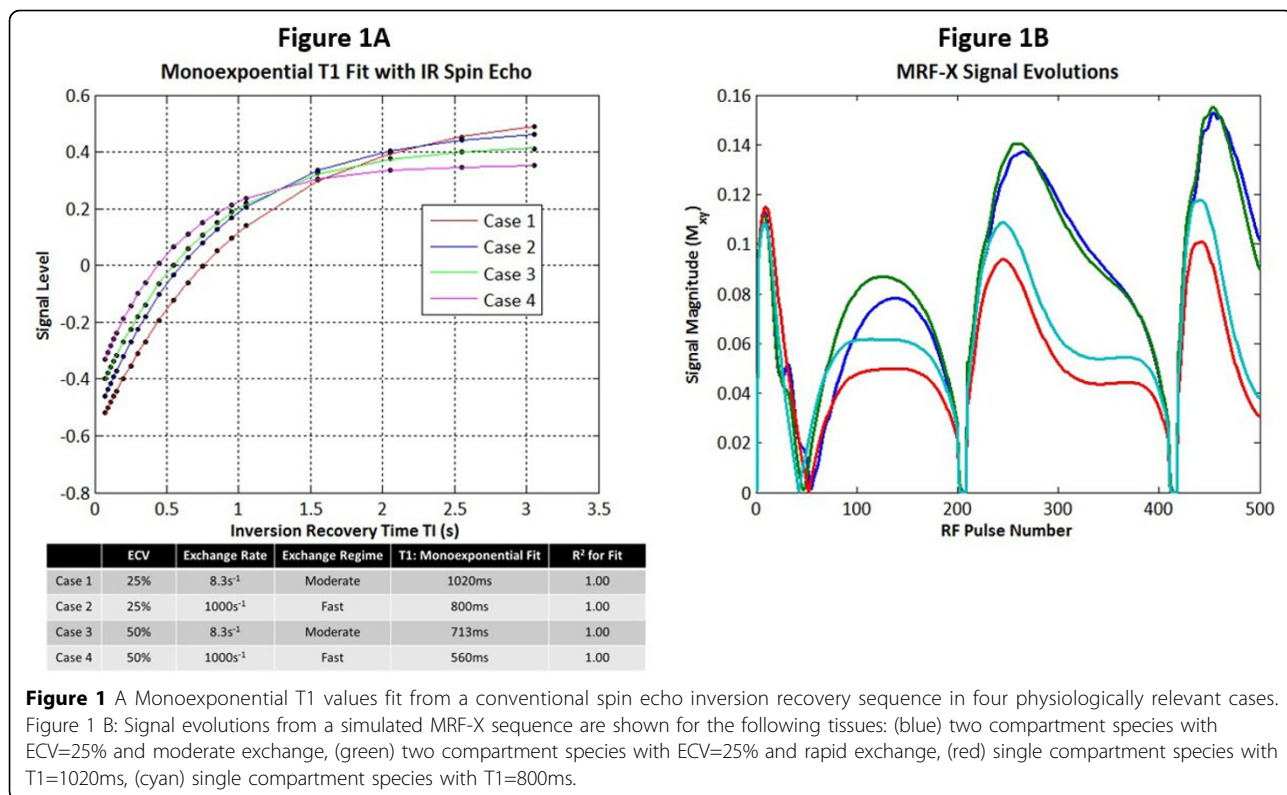
MRF-X has the potential to quantify subvoxel relaxation parameters and volume fractions when chemical exchange is present and could be used to map ECV in a single scan without exogenous contrast agent.

## Funding

NIH/NIBIB R00EB011527 and Siemens Medical Solutions.

<sup>1</sup>Biomedical Engineering, Case Western Reserve University, Cleveland, OH, USA

Full list of author information is available at the end of the article



#### Authors' details

<sup>1</sup>Biomedical Engineering, Case Western Reserve University, Cleveland, OH, USA. <sup>2</sup>Radiology, Case Western Reserve University, Cleveland, OH, USA.

Published: 3 February 2015

#### References

1. Ma, *et al: Nature* 2013, **495**:187-192.
2. Deoni, *et al: J Magn Reson Imaging* 2008, **27**(6):1421-1429.
3. Quirk, *et al: Magn Reson Med* **50**(3):493-499.

doi:10.1186/1532-429X-17-S1-W35

**Cite this article as:** Hamilton *et al.*: MR Fingerprinting with chemical exchange (MRF-X) to quantify subvoxel T1 and extracellular volume fraction. *Journal of Cardiovascular Magnetic Resonance* 2015 **17**(Suppl 1):W35.

**Submit your next manuscript to BioMed Central  
and take full advantage of:**

- Convenient online submission
- Thorough peer review
- No space constraints or color figure charges
- Immediate publication on acceptance
- Inclusion in PubMed, CAS, Scopus and Google Scholar
- Research which is freely available for redistribution

Submit your manuscript at  
[www.biomedcentral.com/submit](http://www.biomedcentral.com/submit)

